

Hana

technical specification



.mdd

.mdd has a leading position among manufacturers of office furniture with many awards that prove quality and continuously increase demand for it's products.

The realities of today's market require constant quality improvement at all levels of modern organization. This applies in particular to customer service, marketing, quality of products and also to quality of processes within the company. Partnership relations among employees and with business partners form a base of economic growth and success of the company.

Constant investments in innovative machinery park, optimization of management systems and an expansion of production halls allow to minimize the lead times for the product of the highest quality.

More than twenty years of experience in office furniture industry come with reference from a long list of companies and institutions to show their appreciation for an efficient and comprehensive service.

.mdd is higly aware of the environment.

Being located in the forest region with lake by it's side, .mdd takes the nature seriously and invests constantly in a modern and energy-efficient solutions to preserve the local life. Company puts emphasis on waste segregation and recycling. .mdd has been awarded for the exceptional care and involvement in waste disposal. All materials used are environmentally friendly and enjoy a high 95 % rate of being recycled.



General informations:

Warranty:

.mdd products - **5 years.**

Electrical components and fabric - **2 years.**

Certificate - MFC:



Boards density:

12 mm - 690 - 750 kg/m³

18 mm - 650 - 690 kg/m³

28 mm - 610 - 630 kg/m³

36 mm - 610 - 630 kg/m³

Certificate - fabric:



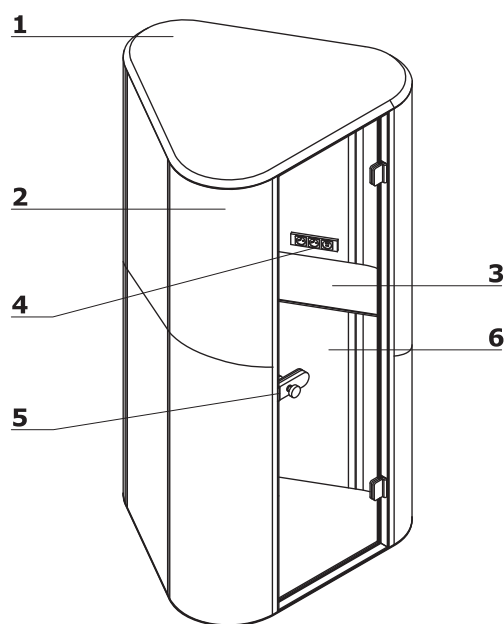
Assembly:

product delivered in separate elements

Packing:

wooden crates

Office booth - Hana



1. Top panel:

* outside - MDF 28 mm, upholstered, clour: LDS27 - black

* inside - chipboard 12 mm upholstered, colour: LDS27 - black, two-point lighting; exhaust fan activated by a motion detector (adjustable ventilation speed); ventilation grate in the floor

2. **Body** - 58 mm, upholstered walls with acoustic filling

3. **Shelf** - MDF board 28 mm, lacquered, measurements: 1070x388x28x28 mm, colour: black

4. **Mediabox** - 2x230V + 1xUSB + 1xUSB type C

5. **Rotary knob** - powder coated steel, colour: black

6. **Door** - toughened glass 8 mm, clear

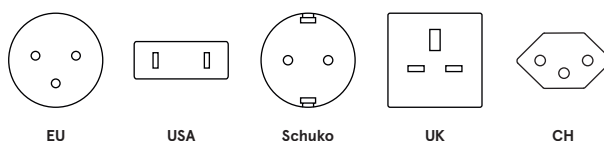
7. Bottom rim:

* outside - MDF 28 mm, upholstered, clour: LDS27 - black

* inside - chipboard 18 mm, carpet, colour: graphite

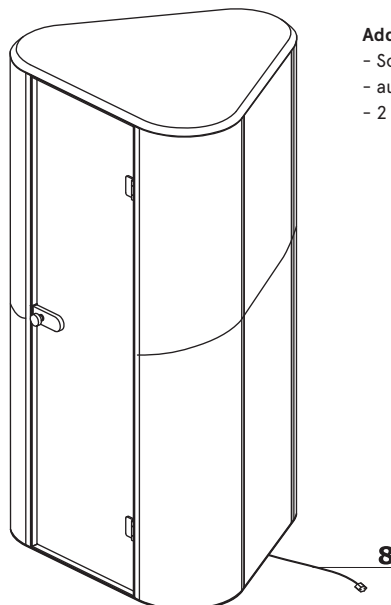
8. **Electric hook** - up

Electric systems available:

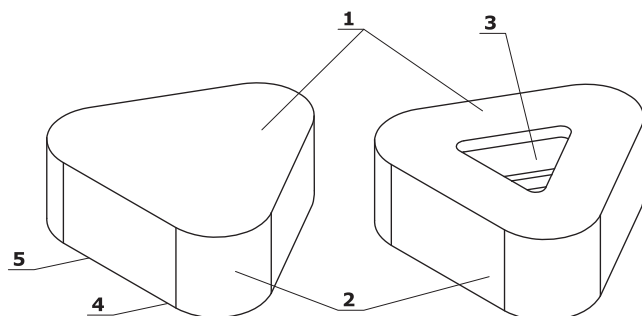


Additional information:

- Sonic technology structure with A-class acoustics certificate
- automatic light switch simultaneously activating the ventilation system
- 2 fans: 1 intake and 1 exhaust; volume 14dB, efficiency 90m3/h



Stool



1. **Seat** - upholstered, filled with 60 mm thick foam

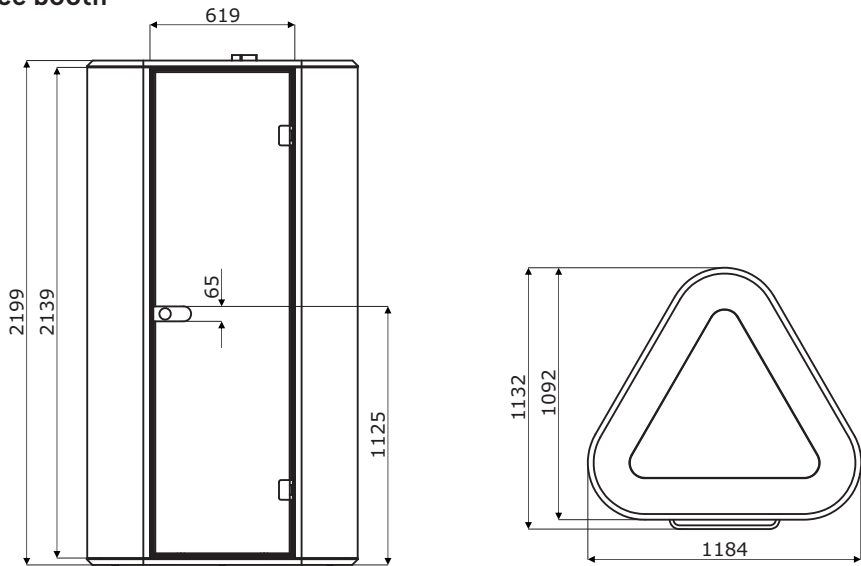
2. **Body** - chipboard frame

3. **Plant pot** - plastic, depth 470 mm

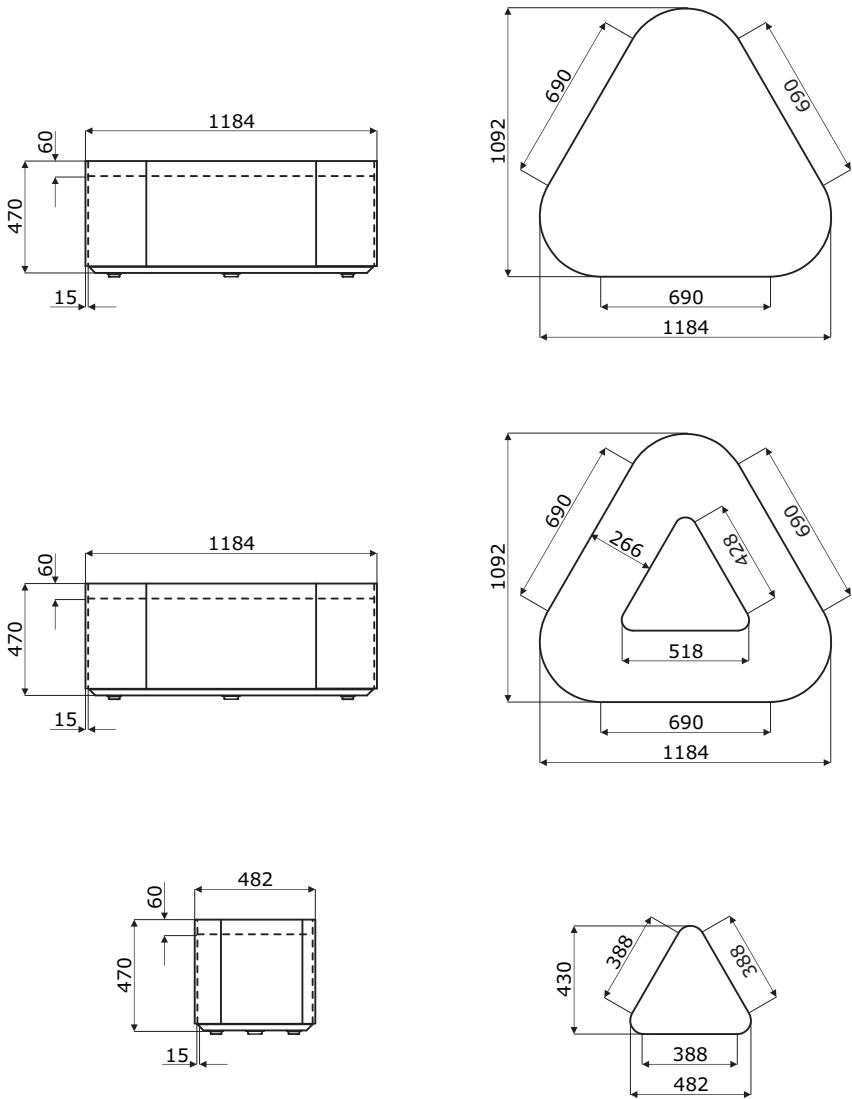
4. **Feet** - plastic, 3 units

5. **Base** - MDF 28 mm, lacquered, colour: black

Dimensions - office booth



Dimensions - stool

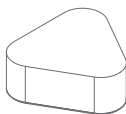


Office booth *

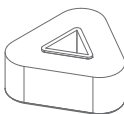


HN01
1184 / 1092 / 2217
340 kg

Stool *



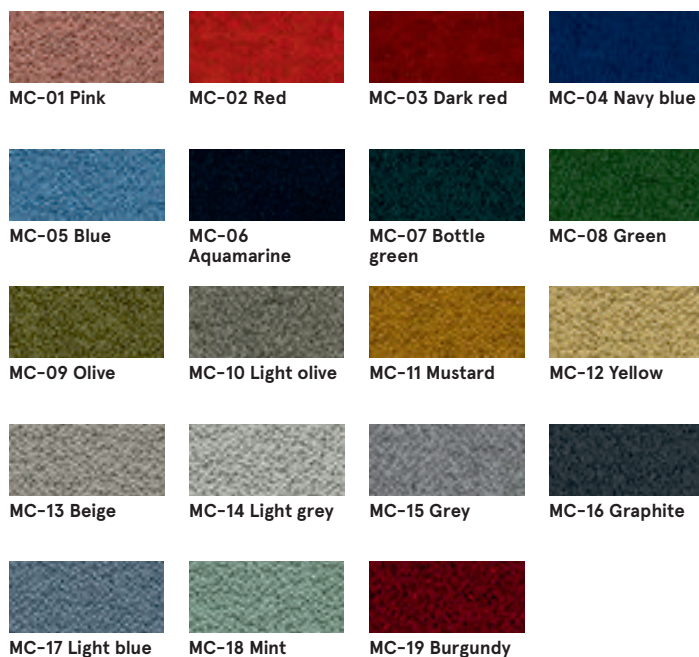
HN02
1184 / 1092 / 470
50 kg



HN03
1184 / 1092 / 470
47 kg

* dimensions expressed in millimeters: width x depth x height

Fabric Mica – second price group



Technical data:

Material	post-consumer recycled polyester 97%, polyester 3%
Fabric weight	305 g/lm
Abrasion resistance rubs	60,000 rubs martindale (EN ISO 12947-2)
Pilling resistance	scale 1-5, max. 5 - EN ISO 12945-2, 4-5
Light fastness	scale 1-8, max. 8 - EN ISO 105-B02, 5-8
Rubbing fastness	dry: 4-5, wet: 4-5, scale 1-5, max. 5 - EN ISO 105x12
Flammability	CA TB 117-2013 ASTM E 84 Class I BS EN 1021-1 Cigarette BS EN 1021-2 Match BS 476 Part 7 class I

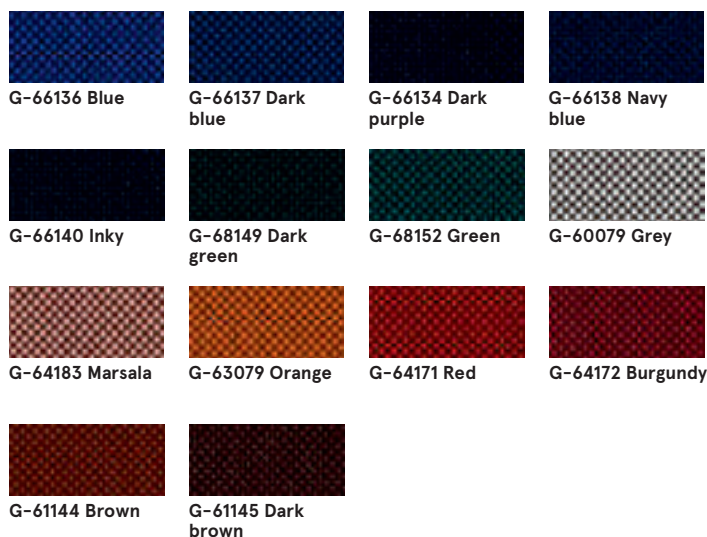
Fabric Medley – second price group



Technical data:

Material	polyester 100%
Fabric weight	510 g/lm (16.45 oz./lin.yd.)
Abrasion resistance rubs	BS EN ISO 12947-2, 75,000 cykli Martindale
Pilling resistance	scale 1-5, max. 5, EN ISO 12945-2 (4)
Colour fastness to light	scale 1-8, max. 8, EN ISO 105-B02 (5-7)
Colour fastness to rubbing	scale 1-5, max. 5, EN ISO 105x12 (wet/dry (4-5/4-5))
Acoustic test sound absorption	ISO 354
Flammability	BS EN 1021-1 (cigarette) BS 476 Part 7, Class 2 Class Uno UNI 9174 - UNI 8457 CA TB 117-2013 ASTM E 84 Class I

Fabric Go Check – second price group



Technical data:

Material	100% Trevira CS
Fabric weight	435g/lm
Abrasion resistance rubs	80,000 rubs martindale (EN ISO 12947-2)
Pilling resistance	scale 1-5, max. 5 - EN ISO 12945-2, 5
Light fastness	scale 1-8, max. 8 - EN ISO 105-B02, 5-8
Rubbing fastness	dry: 4-5, wet: 4-5, scale 1-5, max. 5 - EN ISO 105x12
Flammability	BS EN 1021 1&2 Cigarette and Match BS EN 1021-1 Cigarette BS 5852 Crib 5 BS 7176 Medium hazard DIN 4102 - B1 NFP 92-503/504/505 M1 ÖNORM A3800-B1-B3825-Q1 UK Class Uno UNI 9175 Class 1 I EMME FAR/JAR 25.853 (a) (i) (ii) CA TB 117-2013 DIN EN 13501-1 B-s1,d0 AM 18 - NF D 60-013-(only for fabric)

Fabric Charles * – second price group



Technical data:

Material	100% polyester
Fabric weight	433g/m2
Abrasion resistance rubs	90,000 Martindale cycles (EN ISO 12947-2)
Pilling resistance	EN ISO 12945-2, 5
Light fastness	EN ISO 105-B02, 5
Rubbing fastness	dry: 4-5, wet: 4-5, EN ISO 105x12
Flammability	EN 1021, 1

* There is a possibility of ordering the product in full colour spectrum of Charles range, as per Dekoma pattern book, within the standard delivery time.

Fabric Synergy - third price group



Technical data:

Material	95% Virgin Wool, 5% Poliamid
Fabric weight	400g/m2 ±5% (560 g/lin.m ±5%)
Abrasion resistance rubs	Independently certified ≥100,000 Martindale cycles
Colour fastness to light	5 (ISO 105 - B02)
Colour fastness to rubbing	ISO 105 - X12 - wet: 4, dry: 4
Flammability	EN 1021 - 1 (cigarette, EN 1021 - 2 (match), BS 7176 Low Hazard, UNI 9175 Classe 1 IM, ÖNORM B 3825 & A 3800-1

Fabric Silvertex - third price group

Technical data:

Material	Topcoat: 100% Vinyl Backing: 100% Polyesterr Hi-Loft™
Fabric weight	685 gr/m2
Abrasion resistance	>300,000 cycles Martindale
UV-resistance	>= 7 (1000 hours, blue wool scale)
Cold Crack resistance	-23°C
Flame retardancy	NF P 92-503 / M2 EN 1021, Part 1&2 DIN 4102 B2 ÖNORM B 3825, Gruppe I - Schwerbrennbares Verhalten ÖNORM A 3800, Teil I, Qualmbildungsklasse QI - schwachqualmend IMO Res. MSC.307 (88) (2010 FTP Code) Annex I Part 8 (MED) Marine Equipment Directive in its current valid version UNI 9175 (1987) / UNI 9175/FAI (1994) Classe I.IM (uno I EMME) UNE 23.727-90 IR /M2 EN 71-2: 2006+AI: 2007 Safety of Toys - Part 2: Flammability ECE R 118 (replaces Directive 95/28/EC) FMVSS 302 FAR 25/853
Antimicrobial	Antifungal Protection, Antibacterial Protection, Antimycotic Protection

There is a possibility of ordering the product in full colour spectrum of Silvertex range, as per Spradling's pattern book, within 15 working days.

Fabric Atlas – fourth price group



Technical data:

Material	90% new wool, 10% nylon
Fabric weight	286g/m2, 400g/lm
Abrasion resistance rubs	100,000 cykli Martindale, EN ISO 12947
Colour fastness to light	ISO 105 B02: 6-7
Colour fastness to rubbing	ISO 105-X12:2001, (wet/dry) 4-5/4-5
Flammability	BS EN 1021-2 Match, BS EN 1021-1 Cigarette, BS 5 5852 Crib 5, BS 5852 ignition source 3, BS 5852 Part 1, NF D 60 013, UNI 9175 1IM, US Cal. Bull. 117-2013

Fabric Field2 – fourth price group



Technical data:

Material	100% Trevira CS
Fabric weight	321g/m2, 450g/lm
Abrasion resistance rubs	100,000 cykli Martindale, EN ISO 12947
Colour fastness to light	ISO 105 B02: 5-7
Flammability	BS EN 1021-2 Match, BS EN 1021-1 Cigarette, BS 5 5852 Crib 5, DIN 4102 B1 FAR 25.853, UNI 9177 classe 1, US Cal. Bull. 117-2013